

# Black Knight

## INSTRUCTION BOOKLET

This booklet provides game operation, bookkeeping, game adjustment, and diagnostic and self-test procedures for BLACK KNIGHT. For installation information refer to the blue-covered game manual. For detailed information refer to Williams Solid State Flipper maintenance Manual.

### SPECIAL CONSIDERATIONS WHEN REPLACING CIRCUIT BOARDS

#### CPU Board

1. Revision level 7 CPU Boards (batteries located on lower left corner at board) or later boards must be used.
2. Must be equipped with blue-labeled Flipper ROMs and blue-labeled Game ROMs.
3. Jumpers W3, W10, W11, W14, W17, W19, W20, and W22 must be connected. Jumpers W4, W9, W12, W15, W16, W18, W21, and W23 must be removed. With the exception of W25, (Factory Setting Jumper) all other jumpers are not changed.

#### Driver Board

Either earlier model D 7997 or later model D 8341 boards may be used. When earlier boards are used, switch matrix series resistors R196 thru R211 must be zero-ohm or be replaced with wire jumpers. Later D 8341 boards do not use series resistors in the switch matrix.

#### Sound Board

1. D 8224 required for speech
2. Must be jumpered for white-labeled sound ROM operation and be equipped with Sound ROM 5. (Jumpers W2, W5, W7, W9, W10, W12, and W15 connected; W3, W4, W6, W8, W11, and W13 removed).

#### Power Supply Board

1. When transformer is mounted in cabinet, D 8345 board (equipped with relay) is required. When transformer is mounted in backbox, earlier D 7999 board is required.
2. F4 (20A SB) for flipper solenoids and magnets must be installed.

#### Display Boards

Model C 8363 Master Display and 7-digit Slave Displays required.

#### Optional Speech Module

Requires 5T5001 (IC7), 5T5002 (IC5), 5T5003 (IC6), and 5T5004 (IC4) Speech ROMs.

### GAME OPERATION

\*Indicates adjustable features.

**Game Over Mode** - Turn game ON; player 1 score shows 00, all player scores alternate the high score to date, Game Over lights, all playfield lamps cycle in attract mode.

*Multi-Ball and Magna-Save* are trademarks of Williams Electronics, Inc.

**Credit Posting** - Insert coin; sound produced, number of credits displayed. If maximum credits\* exceeded by coin or high score to date\*, credits are posted correctly, coin lockout de-energizes until remaining credits are below maximum. No credits may be won and coins are rejected while lockout is de-energized.

**Game Start** - Three balls must be resting on ball ramp, locking mechanism, or ball shooter switches (maximum of one ball in ball shooter trough) before game will start. Push credit button, startup tune played, ball served, credit display reduced by 1, player 1 score flashes 00 until first scoring switch is made, ball in play shows 1. Pushing credit button before ball 2 displayed allows additional players.

**Bonus Advance** - The bonus is advanced (from 1,000 to 49,000) one time by making left ramp rollover, twice by making left and right inside rollovers or outlanes, three times by completing a bank of drop targets, and five times by making left or right inside rollovers as a result of *Magna-Save™* feature. With bonus at maximum and multiplier at 5x, completing a bank of drop targets or making one of the advance switches scores 5,000. Bonus multipliers are advanced from 2X to 5X by making the Turnaround.

**Magna-Save Feature\*** - Completing a drop target 3-bank while associated lamp is still flashing scores 10,000, lights a target arrow, and lights a magnet. If the associated lamp goes out before the bank is completed, the bank is reset. With a magnet lamp lit, operating the corresponding *Magna-Save* button on the side of the cabinet energizes the magnet for a \*few seconds and a ball held stationary by the magnet will tend to go through the inside rollover.

**Mystery and Spinner** - Making the left inside rollover flashes the right ramp rollunder for a mystery value. Making the rollunder while still flashing awards the mystery value which will be indicated on other player display(s). Making the right inside rollover flashes the spinner.

**Multi-Ball™ Play** - Making a ball in the lock mechanism when a lock arrow is flashing, lights a lock arrow steadily and lights the lower playfield eject hole. Locking three balls in the mechanism or making the eject hole when lit releases the balls from the mechanism. All scoring and mystery values are tripled while three balls are in play and doubled while two balls are in play. Lock arrows do not flash until turnaround is made.\*

**Extra Ball** - A maximum of four \* Extra Balls may be accumulated at one time. Spotting three arrows for both top and/or\* both bottom banks lights the left ramp rollover for the first possible extra ball. Spotting all 3-bank arrows lights the Turnaround for the second possible Extra Ball. Spotting all 3-bank arrows alternately lights the left ramp rollover and Turnaround for additional Extra Balls. Making left ramp rollover or Turnaround when lit awards an Extra Ball.

**Last Chance\*** - With locked balls on the last ball of the game, the left and right outside rollovers are lit for a "last chance." Making the rollover when lit releases any locked balls (no *Multi-Ball* scoring). If Extra Ball(s) is won during "last chance", the rollovers are not relit.

**Bonus Ball\*** - With two or more players, a player with the highest score is awarded a bonus ball\*. All three balls are released and play is allowed for 30\* seconds with both magnet lamps lit. There is no *Multi-Ball* or mystery scoring or playfield Extra Ball feature during the bonus ball. Extra Balls won from Special or high score levels are awarded as additional bonus balls.

**Special** - Completing all four drop target 3-banks during the bonus ball lights the Turnaround for a possible Special. Making the Turnaround when lit awards a Special.

**Memory** - 3-bank drop target arrows, locked balls, magnet lamps, and Extra Ball lamps.

**Tilt** - Ball in play tilted on first closure of ball roll tilt and third\* closure of Plumb Bob and playfield tilts. Slam tilt return game to game over.

**End of Game** - Match Digits\* appears in ball in play display, \*credit awarded for match. Exceeding high score to date awards \*three credits. Match, High Score to Date, and Game Over sounds made as appropriate. A new game cannot be started with more than one ball resting in the ball shooter trough; excess balls must be returned to the playfield and rest on the ball ramp switches.

With Speech Module, the following phrases are produced during game play.

**Game start, add players 2, 3, and 4; Random phrase:**

**Defend thyself, Knight.**

**I challenge thee to fight me.**

**You cannot fight and win.**

**I will slay you, my enemy.**

**The BLACK KNIGHT will win again.**

**The BLACK KNIGHT will slay you.**

**Fight against me, the BLACK KNIGHT.**

**I will slay thee, Knight.**

**Achievement**

2-ball **Multi-ball** Play  
 3-ball **Multi-ball** Play  
**Magna-Save** drain  
 Win free game  
 Win Extra Ball  
 \*\*After last regular ball:  
 1-player

2-,3-, or 4-players

High Score to Date  
 Match  
 Game Over

\*\*Produced only if "Bonus Ball" enabled.

**Response**

Fight against 2 enemies.  
 Fight against 3 enemies.  
 Laughter.  
 I cannot slay you. You win.  
 Fight me again, Knight.

One enemy cannot fight the  
**BLACK KNIGHT** again.  
 You win the right to fight the  
**BLACK KNIGHT** again.  
 You win one fight. I challenge thee again.  
 The **BLACK KNIGHT** will win again.  
 Will you challenge the **BLACK KNIGHT** again?

**BOOKKEEPING AND GAME EVALUATION**

(Functions 01-17)

1. Set **AUTO-UP/MANUAL-DOWN** switch to **AUTO-UP** and depress **ADVANCE** pushbutton. Test 04 is indicated in the credits display, Function 00 in Match display, and Game Identification in Player 1 display.
2. Operate the **ADVANCE** pushbutton to display Functions 01 thru 04 on the Match display (See Table 1) and record the corresponding totals (number of coins and total paid credits) from the Player 1 display. (To review a total that has been advanced past, set switch to **MANUAL-DOWN** and operate the **ADVANCE** pushbutton).
3. Operate the **ADVANCE** pushbutton to display Functions 05, 06, and 07 in the Match display and record the corresponding free credit totals from the Player 1 display.
4. Operate the **ADVANCE** pushbutton to display Function 08 in the Match display. Total credits is indicated in the Player 1 display, total free credits in the Player 2 display, and percentage of free credits in the Player 4 display.

*Table 1. Audit Totals*

| FUNCTION | DESCRIPTION                                       |                                       |                |
|----------|---|---------------------------------------|----------------|
|          | PLAYER 1  | PLAYER 2                              | PLAYER 4       |
| 00       | Game Identification (2500 2)                      | —                                     | —              |
| 01       | Coins, Left chute<br>(closest to coin door hinge) | —                                     | —              |
| 02       | Coin, center chute                                | —                                     | —              |
| 03       | Coin, right chute                                 | —                                     | —              |
| 04       | Total Paid Credits                                | —                                     | —              |
| 05       | Special Credits                                   | —                                     | —              |
| 06       | Replay Score Credits                              | —                                     | —              |
| 07       | Match Credits                                     | —                                     | —              |
| 08       | Total Credits                                     | Free Credits                          | % Free Credits |
| 09       | Total Extra Balls                                 | —                                     | —              |
| 10       | Ball Time in Minutes                              | —                                     | —              |
| 11       | Total Balls Played                                | —                                     | —              |
| 12       | Current High Score<br>to Date                     | —                                     | —              |
| 13       | Backup High Score<br>to Date                      | High Score to Date<br>Credits Awarded | —              |
| 14       | Replay 1 Score                                    | Times exceeded                        | —              |
| 15       | Replay 2 Score                                    | Times exceeded                        | —              |
| 16       | Replay 3 Score                                    | Times exceeded                        | —              |
| 17       | Replay 4 Score                                    | Times exceeded                        | —              |

5. Operate the ADVANCE pushbutton to display Function 09 thru 12 in the Match display and record the corresponding totals from the Player 1 display.
6. Operate the ADVANCE pushbutton to display Functions 13 thru 17 in the Match display and record the corresponding totals from the **Player 2** display.
7. With switch set to MANUAL-DOWN operate ADVANCE to display Function 50 in the Match Display. From Function 50 you can return to game over or zero audit totals and return to game over. Perform step 8.a. or 8.b. as desired.
8.
  - a. To return to game over, set the switch to AUTO-UP and depress ADVANCE.
  - b. To zero audit totals and return to game over set switch to AUTO-UP, operate the credit button to display 35 in the Player 1 display, and depress ADVANCE.

## GAME ADJUSTMENT PROCEDURE (Functions 13-41)

**Coin door must be open to change settings.**

1. Set AUTO-UP/MANUAL-DOWN switch to AUTO-UP and depress ADVANCE pushbutton. Test 04 is indicated in the Credits display, Function 00 in Match display, and game identification in Player 1 display.
2. To raise Function number in Match display, operate ADVANCE pushbutton with switch set to AUTO-UP. To lower Function number operate ADVANCE with it set to MANUAL-DOWN.
3. With desired Function indicated in Match display, raise value in player 1 display by operating credit button with switch set to AUTO-UP; lower value by operating credit button with it set to MANUAL-DOWN. Value left in Player 1 display is new setting. For values see Table 2 and (for pricing) Table 3.
4. Repeat sets 2 and 3 until all required adjustments have been made.
5. Operate ADVANCE until Function 50 is indicated in Match display. From Function 50 you can return to game over or restore factory settings. Perform step 6 or 7 as desired.
6. To return to game over, depress ADVANCE with switch set to AUTO-UP.
7. To restore factory settings and zero audit totals:
  - a. Operate Credit button with switch set to AUTO-UP until 45 is indicated in Player 1 Display.
  - b. Depress ADVANCE. The game returns to Test 04, Function 00.
  - c. Set switch to MANUAL-DOWN and depress ADVANCE to indicate Function 50.
  - d. Set switch to AUTO-UP and depress ADVANCE.

## RESETTING HIGH SCORE TO DATE

1. Using game adjustment procedure, set Function 13 to the desired reset value.
2. Depress HIGH SCORE RESET pushbutton.

## FACTORY AUDIT TOTALS (Functions 42-49)

The following factory audit functions are assigned:

- 42 - Total "Last Chance" won
- 43 - Total times *Multi-ball* achieved
- 44 - Total times "Mystery" score won
- 45 - Total "Bonus" balls awarded
- 49 - Number of Auto Cycle Test Passes.

Table 2. Game Adjustments

| FUNCTION | DESCRIPTION  | NOTES | *FACTORY SETTING |
|----------|--|-------|------------------|
| 13       | Backup High Score to Date [HSTD Credits Awarded]   | 1     | 2,500,000        |
| 14       | Replay 1 Score [Times exceeded]  | 2     | 1,000,000        |
| 15       | Replay 2 Score [Times exceeded]  | 2     | 2,000,000        |
| 16       | Replay 3 Score [Times exceeded]  | 2     | 0                |
| 17       | Replay 4 Score [Times exceeded]  | 2     | 0                |
| 18       | Maximum Credits  | 3     | 30               |
| 19       | Standard and Custom Pricing Control (00-08)  | 4     | 01/03            |
| 20       | Left Coin Slot Multiplier  | 4     | 03/09            |
| 21       | Center Coin Slot Multiplier  | 4     | 12/45            |
| 22       | Right Coin Slot Multiplier   | 4     | 03/18            |
| 23       | Coin Units Required for Credit   | 4     | 04/05            |
| 24       | Coin Units Bonus Point   | 4     | 15/45            |
| 25       | Minimum Coin Units   | 4     | 00               |
| 26       | Match: 00 = Match ON; 01 = Match OFF   | —     | 00               |
| 27       | Special: 00 = Awards Credit; 01 = Awards Bonus Ball; 02 = Awards Points                                      | —     | 00               |
| 28       | Replay Scores: 00 = Awards Credit; 01 = Awards Extra Ball or Bonus Ball                                      | —     | 00               |
| 29       | Maximum Plumb Bob Tilts  | —     | 03               |
| 30       | Number of Balls(03 or 05)  | —     | 03               |
| 31       | <i>Magna-Save</i> Feature: 03-09 = on time in seconds  | 5     | 05               |
| 32       | Attract Mode Sound; 00 = ON; 01 = OFF  | —     | 00               |
| 33       | Drop Target Timing: 00-09 = 6-15 seconds   | —     | 03               |
| 34       | "Bonus Ball" Time: 00 = not allowed; 01-99 = Time in seconds   | —     | 30               |
| 35       | Bell: 00 = Bell OFF; 01 Bell ON  | —     | 01               |
| 36       | Extra Ball Difficulty 00 = 1st EB from pair of drop target banks<br>01 = All EBs from four drop target banks | —     | 00               |
| 37       | Multi-Ball Difficulty: 00 = Liberal; 01 = Moderate   | —     | 00               |
| 38       | Locked Ball lamps: 00 = Memory; 01 = No Memory   | —     | 01               |
| 39       | Background Sound: 01 = ON; 00 = OFF  | —     | 01               |
| 40       | High Score Credits   | 1     | 03               |
| 41       | Maximum Extra Balls at one time (00 = No Extra Ball)   | —     | 04               |

\* Second Factory Setting value is with jumper W25 connected.

[ ] Description in brackets shown in Player 2 Display.

- Function 13 may be set to any multiple of 100,000 points. Setting Function 40 to zero with Function 13 set to any score but zero permits the High Score to Date feature to operate but no credits are awarded.
- Functions 14-17 (Replay Scores) may be set to any multiple of 100,000 points. Setting a function to zero disables the replay score point.
- Setting Maximum Credits (Function 18) to zero places the game in a free play mode.
- With Function 19 set to 00, Functions 20-25 must be set manually. Refer to Table 2 for eight standard pricing schemes (selected by values of 01-08 for Function 19) and custom pricing values.
- Magnets always enabled during "Bonus Ball".

### RECOMMENDED SCORE LEVELS

#### CREDIT GAMES

3-Ball: \*1,000,000; 2,000,000

5-Ball: 2,000,000; 3,000,000

#### EXTRA BALL

3-Ball: 700,000

5-Ball: 1,000,000

\*Factory Setting

Table 3. Standard and Custom Price Settings

| COIN DOOR<br>MECHANISM   | CREDITS                                       | FUNCTION                     |    |    |    |    |    |    |    |
|--|---|------------------------------|----|----|----|----|----|----|----|
|  |   | 19                           | 20 | 21 | 22 | 23 | 24 | 25 |    |
| Twin-Quarter<br>Quarter, Dollar, Quarter   | 1/25¢, 3/50¢, 7/1\$1                          | 00                           | 03 | 12 | 03 | 02 | 12 | 00 |    |
|  | 1/25¢, 3/50¢, 7/1\$1 coin only                | 00                           | 03 | 14 | 03 | 02 | 00 | 00 |    |
|  | 1/25¢, 7/1\$1 coin only                       | 00                           | 01 | 07 | 01 | 01 | 00 | 00 |    |
|  | 1/25¢, 3/50¢, 6/1\$1                          | 00                           | 01 | 04 | 01 | 01 | 02 | 00 |    |
|  | 1/25¢, 6/1\$1 coin only                       | 00                           | 01 | 06 | 01 | 01 | 00 | 00 |    |
|  | 1/25¢, 5/1\$1                                 | 00                           | 01 | 04 | 01 | 01 | 04 | 00 |    |
|  | 2/50¢, 5/1\$1                                 | 00                           | 01 | 04 | 01 | 01 | 04 | 02 |    |
|  | 1/25¢, 5/1\$1 coin only                       | 00                           | 01 | 05 | 01 | 01 | 00 | 00 |    |
|  | •1/25¢, 4/1\$1                                | 03                           | 01 | 04 | 01 | 01 | 00 | 00 |    |
|  | 2/50¢, 4/1\$1                                 | 00                           | 01 | 04 | 01 | 01 | 00 | 02 |    |
| IDM, 5DM, 2DM  | •1/50¢, 2/75¢, 3/4 x 25¢<br>4/1\$1 or 5 x 24¢ | 05                           | 03 | 15 | 03 | 04 | 15 | 00 |    |
|  | 1/50¢, 3/1\$, 4/1\$.25                        | 00                           | 03 | 12 | 03 | 04 | 15 | 00 |    |
|  | 1/50¢, 3/1\$, 7/1\$2                          | 00                           | 12 | 48 | 12 | 14 | 96 | 18 |    |
|  | •1/50¢, 3/1\$, 6/1\$2                         | 01                           | 01 | 04 | 01 | 02 | 04 | 00 |    |
|  | 1/50¢   | 00                           | 01 | 04 | 01 | 02 | 00 | 00 |    |
|  | •1/1DM, 3/2DM, 10/5DM                         | 02                           | 09 | 45 | 18 | 05 | 45 | 00 |    |
|  | 2/1DM, 5/2DM, 14/5DM                          | 00                           | 13 | 65 | 26 | 05 | 65 | 00 |    |
|  | 1/20¢, 3/50¢                                  | 00                           | 06 | 00 | 15 | 05 | 00 | 00 |    |
|  | 1 Franc, 10 Franc, 5 Franc                    | •1/2F, 3/5F only, 8/10F only | 04 | 01 | 16 | 06 | 02 | 00 | 00 |
|  | 25 Cent,<br>1 Guilder,                        | •1/25¢, 4/1G<br>1/25¢, 5/1G  | 06 | 01 | 00 | 04 | 01 | 00 | 00 |
| Twin 100 Yen<br>1 Franc or<br>Twin-1 Franc<br>5 Franc,<br>10 Franc<br>Twin-2 Franc<br>10, 20 Franc<br>Twin-1 Sucre | 2/100Y  | 00                           | 02 | 00 | 02 | 01 | 00 | 00 |    |
|  | 1/1F, 3/2F                                    | 00                           | 01 | 01 | 01 | 01 | 02 | 00 |    |
|  | 1/1F  | 00                           | 01 | 01 | 01 | 01 | 00 | 00 |    |
|  | •1/5F, 2/10F                                  | 07                           | 01 | 00 | 02 | 01 | 00 | 00 |    |
|  | •1/10F  | 08                           | 01 | 00 | 02 | 02 | 00 | 00 |    |
|  | •1/2F   | 03                           | 01 | 04 | 01 | 01 | 00 | 00 |    |
|  | •1/10F, 2/20F                                 | 07                           | 01 | 00 | 02 | 01 | 00 | 00 |    |
|  | 1/3S, 2/5S                                    | 00                           | 02 | 00 | 02 | 05 | 00 | 00 |    |

•Indicates standard price settings by adjusting only Function 19. For other price settings, set Function 19 to 00 and set Functions 20 through 25 to the values indicated in the chart.

## **DIAGNOSTIC PROCEDURES**

### **Display Digits Test**

1. Set AUTO-UP/ to MANUAL-DOWN switch and depress ADVANCE. Displays should indicate all 0's.
2. Set the switch to AUTO-UP. Displays should sequence from all 0's thru all 9's. Comma segments should come on when odd digits are displayed.
3. To stop cycling, set switch to MANUAL-DOWN. Operate ADVANCE pushbutton to step tests one number at a time. Set switch to AUTO-UP to resume cycling.

### **Sound Test**

1. From Display Digits Test depress ADVANCE with the switch set to AUTO-UP. Test 00 should be indicated in the number of Credits display and the Match display sequences from 00 thru 06. Different sounds should be produced for 00, 01, 02, 03, and 04.
2. To continuously pulse a single sound, set the toggle switch to MANUAL-DOWN. Operate ADVANCE pushbutton to sequence through sounds one at a time. Set toggle switch to AUTO-UP to resume sequencing.

**Lamp Test**

From Sound Test depress ADVANCE with the switch set to AUTO-UP Test 01 should be indicated in the Credits display and all multiplexed lamps should flash.

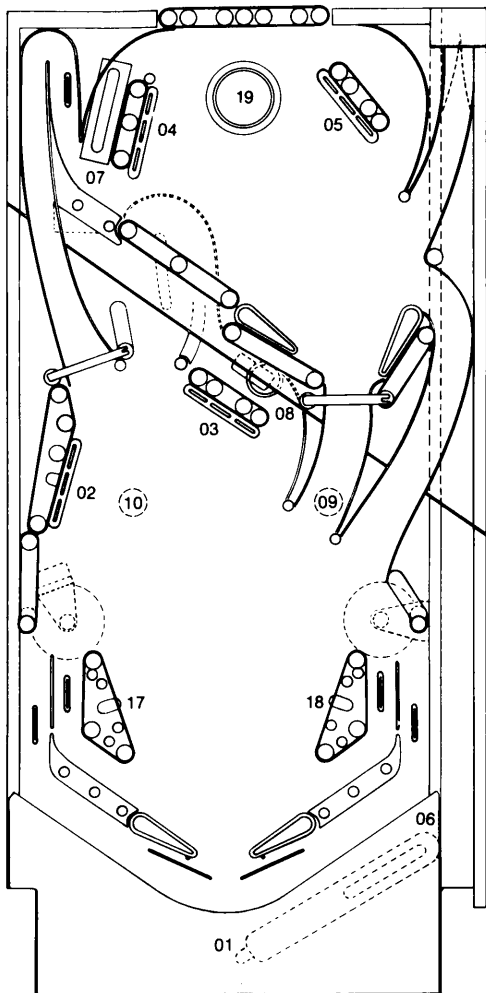


| COLUMN<br>ROW             | 1<br>YEL-BRN<br>2J5-8             | 2<br>YEL-RED<br>2J5-9            | 3<br>YEL-ORN<br>2J5-6                   | 4<br>YEL-BLK<br>2J5-7                      | 5<br>YEL-GRN<br>2J5-3                  | 6<br>YEL-BLU<br>2J5-5                            | 7<br>YEL-VIO<br>2J5-1 | 8<br>YEL-GRY<br>2J5-2 |
|---------------------------|-----------------------------------|----------------------------------|---|--|--|--|-----------------------|-----------------------|
| 1<br>RED-<br>BRN<br>2J7-1 | SAME<br>PLAYER<br>SHOOTS<br>AGAIN | RIGHT<br>MAGNA-<br>SAVE™<br>LAMP | BOTTOM<br>LEFT<br>3-BANK<br>LAMP        | BOTTOM<br>LEFT<br>3-BANK,<br>LOWER ARROW   | TOP<br>LEFT,<br>3-BANK<br>LOWER ARROW  | LEFT RAMP<br>ROLLUNDER<br>EXTRA BALL<br>WHEN LIT | "2"<br>BONUS          | "10"<br>BONUS         |
| 2<br>RED-<br>BLK<br>2J7-2 | BALL<br>IN<br>PLAY                | LEFT<br>MAGNA-<br>SAVE™<br>LAMP  | BOTTOM<br>RIGHT<br>3-BANK<br>LAMP       | BOTTOM<br>LEFT<br>3-BANK<br>CENTER ARROW   | TOP<br>LEFT,<br>3-BANK<br>CENTER ARROW | LEFT<br>LOCK<br>LAMP                             | "3"<br>BONUS          | "20"<br>BONUS         |
| 3<br>RED-<br>ORN<br>2J7-3 | TILT                              | LEFT<br>OUTLANE                  | TOP<br>LEFT<br>3-BANK<br>LAMP           | BOTTOM<br>LEFT<br>3-BANK<br>UPPER ARROW    | TOP<br>LEFT,<br>3-BANK<br>UPPER ARROW  | NOT<br>USED                                      | "4"<br>BONUS          | "30"<br>BONUS         |
| 4<br>RED-<br>YEL<br>2J7-4 | GAME<br>OVER                      | RIGHT<br>OUTLANE                 | TOP<br>RIGHT<br>3-BANK<br>LAMP          | 2X<br>SCORING                              | JET<br>BUMPER                          | NOT<br>USED                                      | "5"<br>BONUS          | "40"<br>BONUS         |
| 5<br>RED-<br>GRN<br>2J7-5 | MATCH                             | RIGHT<br>SPINNER                 | CENTER<br>LOCK<br>LAMP                  | BOTTOM<br>RIGHT<br>3-BANK,<br>RIGHT ARROW  | TOP<br>RIGHT<br>3-BANK<br>LOWER ARROW  | NOT<br>USED                                      | "6"<br>BONUS          | 2x                    |
| 6<br>RED-<br>BLU<br>2J7-6 | HIGH<br>SCORE<br>TO<br>DATE       | RAMP<br>ROLLUNDER                | TURNAROUND<br>EXTRA<br>BALL<br>WHEN LIT | BOTTOM<br>RIGHT<br>3-BANK,<br>CENTER ARROW | TOP<br>RIGHT<br>3-BANK<br>CENTER ARROW | NOT<br>USED                                      | "7"<br>BONUS          | 3x                    |
| 7<br>RED-<br>VIO<br>2J7-9 | CREDITS<br>(PLAY-<br>FIELD)       | RIGHT<br>INSIDE<br>ROLLOVER      | TURNAROUND<br>SPECIAL                   | BOTTOM<br>RIGHT<br>3-BANK,<br>LEFT ARROW   | TOP<br>RIGHT<br>3-BANK<br>UPPER ARROW  | SAME PLAYER<br>SHOOTS<br>AGAIN<br>(PLAYFIELD)    | "8"<br>BONUS          | 4x                    |
| 8<br>RED-<br>GRY<br>2J7-8 | BONUS<br>BALL<br>TIME             | LEFT<br>INSIDE<br>ROLLOVER       | LOWER<br>PLAYFIELD<br>EJECT<br>HOLE     | 3X<br>SCORING                              | RIGHT<br>LOCK<br>LAMP                  | "1"<br>BONUS                                     | "9"<br>BONUS          | 5x                    |

Figure 1. Lamp Matrix

## Solenoid Test

1. From Lamp Test depress ADVANCE with the switch set to AUTO-UP. Test 02 should be indicated in the Credits display. Display sequences from 01 thru 25. Corresponding solenoids 01 thru 24 are pulsed. Flipper relay is de-energized with substest 25.
2. To continuously pulse a single solenoid set switch to MANUAL-DOWN. Operate ADVANCE pushbutton sequence through the solenoids one at a time. Set toggle switch to AUTO-UP to resume sequencing.



### Sol. No. Function

|     |                                      |
|-----|--------------------------------------|
| 01  | Ball Release                         |
| 02  | Lower Left 3-Bank Drop Target Reset  |
| 03  | Lower Right 3-Bank Drop Target Reset |
| 04  | Upper Left 3-Bank Drop Target Reset  |
| 05  | Upper Right 3-Bank Drop Target Reset |
| 06  | Ball Ramp Thrower                    |
| 07  | Multi-Ball Release                   |
| 08  | Lower Eject Hole                     |
| 09  | Right Magnet Relay                   |
| 10  | Left Magnet Relay                    |
| *11 | Special Relay                        |
| 12  | Not Used                             |
| 13  | Not Used                             |
| 14  | Not Used                             |
| 15  | Bell                                 |
| 16  | Coin Lockout                         |
| 17  | Left Kicker                          |
| 18  | Right Kicker                         |
| 19  | Jet Bumper                           |
| 20  | Not Used                             |
| 21  | Not Used                             |
| 22  | Not Used                             |

\* Special relay located on Power Supply Board (games with transformer in cabinet) or in backbox (games with transformer in backbox).

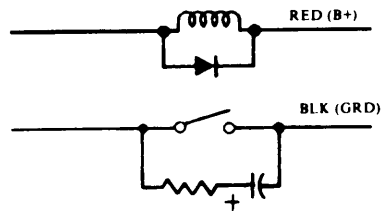
Figure 2. Playfield Solenoid Locations and Solenoid Chart

Table 4. Solenoid Connections

| SOL. NO. | FUNCTION                             | WIRE COLOR | CONNECTIONS          | *DRIVER TRANS. | SOLENOID PART NO.       |
|----------|--------------------------------------|------------|----------------------|----------------|-------------------------|
| 01       | Ball Release                         | GRY-BRN    | 2P11-4, 8P3-1        | Q15 Q7         | SA-23-850-DC            |
| 02       | Lower Left 3-Bank Drop Target Reset  | GRY-RED    | 2P11-5, 8P3-2        | Q17 Q8         | SA-3-23-850-DC          |
| 03       | Lower Right 3-Bank Drop Target Reset | GRY-ORN    | 2P11-7, 8P3-3        | Q19 Q9         | SA-3-23-850-DC          |
| 04       | Upper Left 3-Bank Drop Target Reset  | GRY-YEL    | 2P11-8, 8P3-4        | Q21 Q10        | SA-3-23-750-DC          |
| 05       | Upper Right 3-Bank Drop Target Reset | GRY-GRN    | 2P11-9, 8P3-5        | Q23 Q11        | SA-3-23-750-DC          |
| 06       | Ball Ramp Thrower                    | GRY-BLU    | 2P11-3, 8P3-6        | Q25 Q14        | SG-23-750-DC            |
| 07       | Multi-Ball Release                   | GRY-VIO    | 2P11-2, 8P3-7        | Q27 Q15        | SG-23-750-DC            |
| 08       | Lower Eject Hole                     | GRY-BLK    | 2P11-1, 8P3-8        | Q29 Q16        | SG-23-750-DC            |
| *09      | Right Magnet Relay                   | BRN-BLK    | 2P9-9, 10P3-9        | Q31 Q13        | SM-35-4000-DC           |
| *10      | Left Magnet Relay                    | BRN-RED    | 2P9-7, 10P3-10       | Q33 Q12        | SM-35-4000-DC           |
| 11       | Special Relay                        | BRN-ORN    | 2P9-1, 10P3-11       | Q35 Q17        | SA-24-750-DC            |
| 12       | Not Used                             | BRN-YEL    | 2P9-2, 10P3-12       | Q37 Q18        | -                       |
| 13       | Not Used                             | BRN-GRN    | 2P9-3, 10P3-13       | Q39 Q19        | -                       |
| 14       | Not Used                             | BRN-BLU    | 2P9-4, 7P1-16        | Q41 Q20        | -                       |
| 15       | Bell                                 | BRN-VIO    | 2P9-5, 7P1-17        | Q43 Q21        | SM29-1000-DC            |
| 16       | Coin Lockout                         | BRN-GRY    | 2P9-6, 7P1-18, 7P2-4 | Q45 Q22        | SM-35-4000-DC           |
| *17      | Left Kicker                          | BLU-BRN    | 2P12-7, 8P3-17       | Q2 Q1          | SG-23-850-DC            |
| *18      | Right Kicker                         | BLU-RED    | 2P12-4, 8P3-18       | Q4 Q5          | SG-23-850-DC            |
| *19      | Jet Bumper                           | BLU-ORN    | 2P12-3, 8P3-19       | Q6 Q4          | SG-23-850-DC            |
| *20      | Not Used                             | BLU-YEL    | 2P12-6, 8P3-20       | Q8 Q6          | -                       |
| *21      | Not Used                             | BLU-GRN    | 2P12-8, 8P3-21       | Q10 Q2         | -                       |
| *22      | Not Used                             | BLU-BLK    | 2P12-9, 8P3-22       | Q12 Q3         | -                       |
| *        | Lower Right Flipper                  | BLU-VIO    | 7P1-8, 8P3-3         | -              | SF1-19-400<br>30-750-DC |
|          | Upper Right Flipper                  | BLK-YEL    | 7P1-31, 8P3-5        | -              | SF1-19-400<br>30-750-DC |
| *        | Lower Left Flipper                   | BLU-GRY    | 7P1-10, 8P3-4        | -              | SF1-19-400<br>30-750-DC |
| *        | Upper Left Flipper                   | BLK-GRY    | 7P1-30, 8P3-9        | -              | SF1-19-400<br>30-750-DC |

**\*NOTES:**

1. First reference no. for D7997 (earlier) Driver Board; 2nd is for D8341 Driver Board.
2. Contacts of solenoids 09 and 10 switch ground to magnets (Part No. 20-8991)
3. Special switch connections for solenoids 17 through 19 are as follows:  
 17 --- ORN-BRN --- 2P13-5, 8P3-5  
 18 --- ORN-RED --- 2P13-3, 8P3-6  
 19 --- ORN-BLK --- 2P13-2, 8P3-7
4. Flipper button connections are as follows:  
 Right --- ORN-VIO --- 2P12-1, 7P1-7  
 Left --- ORN-GRY --- 2P12-2, 7P1-9
5. Typical wiring for solenoids and special switches:



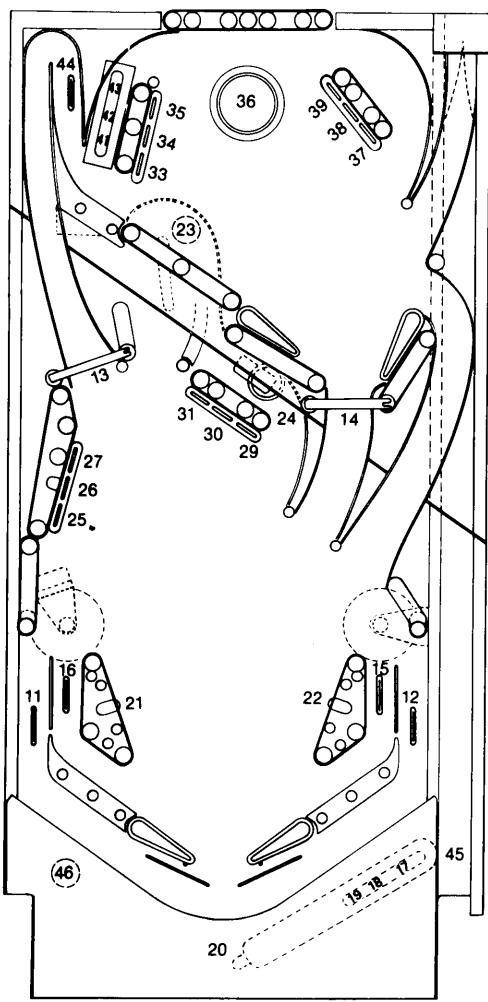
**Switch Test**

1. From Solenoid Test depress ADVANCE with the switch set to AUTO-UP. Test 03 should be indicated in the Credits display and any stuck switches in the Master display. As stuck switch(es) is displayed a sound is produced. The display continuously cycles through the stuck switches and as they are opened, the number is removed from the sequence. When all switches are open, the Match display is blank and the sounds stop.
2. If all switches in a row are displayed, first verify that all are open and then check for a short to ground on the row wire.

3. Operate switches; a sound is produced and switch number is momentarily indicated in the ball in play display. If two switches in a row are indicated with one switch closed, check for a short between the column wires; for multiple indication check column wire for short to ground. If two switches in a column are indicated with one switch closed, check for short between row wires.
4. If proper indications are obtained in Test 03 but matrix problem is suspected in game play, disconnect lamp connectors 2P5 and 2P7. Recheck in game play. Perform CPU Self-Test if problem remains. If problem is cleared, check for short between lamp matrix and jet bumper mounting brackets.
5. Shorted diodes can cause "rectangle" switch matrix problems as follows: Lower left 3-bank right target down, (switch 27) lower right 3-bank center target down (switch 30) and as ball enters the lockup trough making switch 43, a shorted diode at switch 27 would cause switch 46, Playfield Tilt, to be indicated. Note that the "rectangle" is always completed with an incorrect switch diagonally opposite from the switch with the shorted diode.

**Switch  
No. Function (Score)**

- 01 Plumb Bob Tilt
- 02 Ball Roll Tilt
- 03 Credit Button
- 04 Right Coin Switch
- 05 Center Coin Switch
- 06 Left Coin Switch
- 07 Slam Tilt
- 08 High Score Reset
- 09 Right Magnet Button
- 10 Left Magnet Button
- 11 Left Outlane (5,000)
- 12 Right Outlane (5000)
- 13 Spinner (100/2,500\*)
- 14 Right Ramp Rollunder (500/Mystery)
- 15 Right Inside Rollover (2,000/10,000\*\*)
- 16 Left Inside Rollover (2,000/10,000\*\*)
- 17 Right Ball Ramp
- 18 Center Ball Ramp
- 19 Left Ball Ramp
- 20 Outhole
- 21 Left Kicker (10)
- 22 Right Kicker (10)
- 23 Turnaround (5,000)
- 24 Lower Playfield Eject Hole (5,000)
- 25 Lower Left 3-Bank, Lower Target (1,000)
- 26 Lower Left 3-Bank, Center Target (1,000)
- 27 Lower Left 3-Bank, Upper Target (1,000)
- 28 Not Used
- 29 Lower Right 3-Bank, Right Target (1,000)
- 30 Lower Right 3-Bank, Center Target (1,000)
- 31 Lower Right 3-Bank, Left Target (1,000)
- 32 Not Used
- 33 Top Left 3-Bank, Lower Target (1,000)
- 34 Top Left 3-Bank, Center Target (1,000)
- 35 Top Left 3-Bank, Upper Target (1,000)
- 36 Jet Bumper (500)
- 37 Top Right 3-Bank, Lower Target (1,000)
- 38 Top Right 3-Bank, Center Target (1,000)
- 39 Top Right 3-Bank, Upper Target (1,000)
- 40 Not Used
- 41 Lockup Trough, Bottom (5,000‡)
- 42 Lockup Trough, Center (5,000‡)
- 43 Lockup Trough, Top (5,000‡)
- 44 Left Ramp Rollover (5,000)
- 45 Ballshooter Trough
- 46 Playfield Tilt



Note: Second value is lit or flashing value  
 \*Spinner lit for interval after making right inside rollover  
 Mystery is 20,000 - 99,000 and lit for interval after making left inside rollover  
 \*\*Inside rollovers light when made after using **Magna-Save** feature  
 ‡Only one lockup trough switch scores for each locked-up ball

Figure 3. Playfield Switch Locations and Switch Chart

| COLUMN<br>ROW             | 1<br>GRN-BRN<br>2J2-9         | 2<br>GRN-RED<br>2J2-8             | 3<br>GRN-ORN<br>2J2-7                          | 4<br>GRN-YEL<br>2J2-6                           | 5<br>GRN-BLK<br>2J2-5                         | 6<br>GRN-BLU<br>2J2-3             | 7<br>GRN-VIO<br>2J2-2 | 8<br>GRN-GRY<br>2J2-1 |
|---------------------------|-------------------------------|-----------------------------------|--|---|---|-----------------------------------|-----------------------|-----------------------|
| 1<br>WHT-<br>BRN<br>2J3-9 | 1<br>PLUMB<br>BOB<br>TILT     | 9<br>RIGHT<br>MAGNET<br>BUTTON    | 17<br>RIGHT<br>BALL<br>RAMP                    | 25<br>LOWER LEFT<br>3-BANK<br>LOWER<br>TARGET   | 33<br>TOP LEFT<br>3-BANK<br>LOWER<br>TARGET   | 41<br>LOCKUP<br>TROUGH,<br>BOTTOM | 49<br>NOT<br>USED     | 57<br>NOT<br>USED     |
| 2<br>WHT-<br>RED<br>2J3-8 | 2<br>BALL<br>ROLL<br>TILT     | 10<br>LEFT<br>MAGNET<br>BUTTON    | 18<br>CENTER<br>BALL<br>RAMP<br>TARGET         | 26<br>LOWER LEFT<br>3-BANK<br>CENTER<br>TARGET  | 34<br>TOP LEFT<br>3-BANK<br>CENTER<br>TARGET  | 42<br>LOCKUP<br>TROUGH,<br>CENTER | 50<br>NOT<br>USED     | 58<br>NOT<br>USED     |
| 3<br>WHT-<br>ORN<br>2J3-7 | 3<br>CREDIT<br>BUTTON         | 11<br>LEFT<br>OUTLANE             | 19<br>LEFT<br>BALL<br>RAMP                     | 27<br>LOWER LEFT<br>3-BANK<br>UPPER<br>TARGET   | 35<br>TOP LEFT<br>3-BANK<br>UPPER<br>TARGET   | 43<br>LOCKUP<br>TROUGH,<br>TOP    | 51<br>NOT<br>USED     | 59<br>NOT<br>USED     |
| 4<br>WHT-<br>YEL<br>2J3-6 | 4<br>RIGHT<br>COIN<br>SWITCH  | 12<br>RIGHT<br>OUTLANE            | 20<br>OUTHOLE                                  | 28<br>NOT<br>USED<br>STANDUP                    | 36<br>JET<br>BUMPER                           | 44<br>LEFT<br>RAMP<br>ROLLOVER    | 52<br>NOT<br>USED     | 60<br>NOT<br>USED     |
| 5<br>WHT-<br>GRN<br>2J3-5 | 5<br>CENTER<br>COIN<br>SWITCH | 13<br>LEFT<br>SPINNER             | 21<br>LOWER<br>KICKER<br>3-BANK<br>LEFT TARGET | 29<br>LOWER<br>RIGHT<br>3-BANK<br>RIGHT TARGET  | 37<br>TOP<br>RIGHT<br>3-BANK<br>LOWER TARGET  | 45<br>BALLSHOOTER<br>TROUGH       | 53<br>NOT<br>USED     | 61<br>NOT<br>USED     |
| 6<br>WHT-<br>BLU<br>2J3-4 | 6<br>LEFT<br>COIN<br>SWITCH   | 14<br>RIGHT<br>RAMP<br>ROLLUNDER  | 22<br>RIGHT<br>KICKER                          | 30<br>LOWER<br>RIGHT<br>3-BANK<br>CENTER TARGET | 38<br>TOP<br>RIGHT<br>3-BANK<br>CENTER TARGET | 46<br>PLAYFIELD<br>TILT           | 54<br>NOT<br>USED     | 62<br>NOT<br>USED     |
| 7<br>WHT-<br>VIO<br>2J3-3 | 7<br>SLAM<br>TILT             | 15<br>RIGHT<br>INSIDE<br>ROLLOVER | 23<br>TURNAROUND                               | 31<br>LOWER<br>RIGHT<br>3-BANK<br>LEFT TARGET   | 39<br>TOP<br>RIGHT<br>3-BANK<br>UPPER TARGET  | 47<br>NOT<br>USED                 | 55<br>NOT<br>USED     | 63<br>NOT<br>USED     |
| 8<br>WHT-<br>GRY<br>2J3-1 | 8<br>HIGH<br>SCORE<br>RESET   | 16<br>LEFT<br>INSIDE<br>ROLLOVER  | 24<br>LOWER<br>PLAYFIELD<br>EJECT<br>HOLE      | 32<br>NOT<br>USED<br>STANDUP                    | 40<br>NOT<br>USED<br>STANDUP                  | 48<br>NOT<br>USED                 | 56<br>NOT<br>USED     | 64<br>NOT<br>USED     |

Figure 5. Switch Matrix

## INITIATING AUTO-CYCLE MODE

1. Set AUTO-UP/MANUAL-DOWN switch to AUTO-UP and depress ADVANCE pushbutton. Test 04 is indicated in Credit display and Function 00 in Match Display.
2. Set switch to MANUAL-DOWN and depress ADVANCE to indicate Function 50 in the Match Display.
3. Set switch to AUTO-UP and operate Credit button to indicate 15 in Player 1 Display.
4. Depress ADVANCE pushbutton to start Auto-Cycle mode. Each cycle of this mode sequences thru the Display Digits Test, Sound Test (00), Lamp Test (01), and Solenoid test (02).
5. To terminate the test and return to game over, turn the game OFF and back ON.

## CPU BOARD SELF-TEST

Depress the DIAGNOSTIC pushbutton on the left side of the CPU Board. The following indications are provided for a few seconds and then the game attempts to go to game over:

- 0 - Test Passed
  - 1 - IC13 RAM Faulty
  - 2 - IC16 RAM Faulty
  - 3 - IC17 ROM 2 Faulty
  - 4 - IC17 ROM 2 Faulty
  - 5 - IC20 ROM 1 Faulty
  - 6 - IC14 Game ROM 1 Faulty
  - 7 - IC26 Game ROM 0 Faulty
  - 8 - IC19 CMOS RAM or Memory Protect Circuit Faulty
  - 9 - Coin-door closed, Memory Protect Circuit Faulty, or IC19 CMOS RAM Faulty.
- Note that "0" remaining after power turn-on indicates CPU Board lockup.

## SOUND BOARD SELF-TEST

Depress DIAGNOSTIC pushbutton on the top of the Sound Board. Several electronic sounds should be produced and then the BLACK KNIGHT vocabulary is produced. This sequence is repeated until the game is turned OFF and back ON.

| <u>Vocabulary</u> | <u>Located in ROM</u>     |
|-------------------|---------------------------|
| KNIGHT            | 5T 5001 (IC7)             |
| BLACK             | 5T 5001                   |
| DEFEND            | 5T 5001                   |
| CHALLENGE         | 5T 5001                   |
| THEE (THE)        | 5T 5002 (IC5)             |
| WILL              | 5T 5002                   |
| YOU               | 5T 5002                   |
| I                 | 5T 5002                   |
| AGAIN             | 5T 5002 and 5T 5003 (IC6) |
| SLAY              | 5T 5003                   |
| CANNOT            | 5T 5003                   |
| SELF              | 5T 5003                   |
| ENEMY             | 5T 5003 and 5T 5004 (IC4) |

The IC4 Speech ROM contains laughter and "F" and "R" sounds. The laughter, "F" and "R" sounds, and the following partial or composite words produced in game play are not produced in diagnostics.

|          |         |       |
|----------|---------|-------|
| WIN      | ENEMIES | THREE |
| ME       | THYSELF | AND   |
| TO (TWO) | FIGHT   | MY    |
| AGAINST  | RIGHT   |       |

Warning: This equipment generates, uses, and can radiate radio frequency energy and if not installed and used in accordance with the instructions manual, may cause interference to radio communications. As temporarily permitted by regulation it has not been tested for compliance pursuant to Subpart J of Part 15 of FCC Rules, which are designed to provide reasonable protection against such interference. Operation of this equipment in a residential area is likely to cause interference in which case the user at his own expense will be required to take whatever measures may be required to correct the interference."